

IPC USER MANUAL

Matters needing attention	2
1、Connect.....	2
Connection mode A: Wired Network.....	2
Connection mode B: LAN connection	2
2、Device	3
2.2 Device browsing	3
3、Firefox and Chrome preview.....	4
4、Parameter setting	5
4.1Real time preview.....	5
4.2. Remote settings	6
Device Setting ---- OSD configuration	6
Camera configuration - privacy cover	7
Network settings - port settings	8
Network settings ----PPPoE settings	9
Network settings - Mail settings.....	9
Network settings ----FTP settings.....	10
Network settings ----DDNS settings	10
Network settings ----RTSP settings.....	11
Network setting ----UPNP	11
Network setting ----P2P.....	12
Coding settings - coding parameters.....	12
Encoding settings - Audio settings	13
Alarm setting - Mobile detection	13
System configuration - Time setting.....	14
System settings - User management.....	14
System settings - Device information	15
System configuration -- Log query	15
System configuration - Automatic maintenance	15
System settings ----PTZ settings	16
System maintenance – Version upgrades	16
System maintenance - Restore default	16
4.3.Local settings.....	16
4.4Logout.....	17
5. FAQ.....	17

Matters needing attention

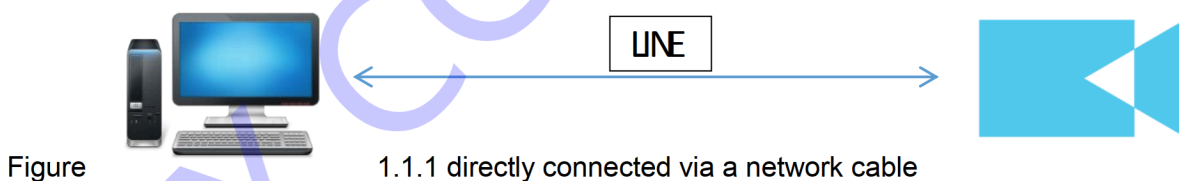
- For the network camera after the installation is complete, the need for the configuration and function of the parameter settings, you can function through the browser configuration. The products are subject to the object, and the instructions are for reference only.
- For instructions and procedures will be updated in real time according to the product, if the upgrade without notice.
- For instructions may contain technical inaccuracies, or not in accordance with the product function and operation, in order to final interpretation shall prevail.
- For installation, please be sure to turn off all power supply equipment.
- For after receiving the product, please open the box, take out the device, according to box packing list to confirm packing products and accessories.
- Please promptly change the default password for users in the equipment dispatched, to avoid being stolen.
- Please keep the level for equipment installation, or installed in a stable place, pay attention to prevent the fall.
- For cleaning equipment, please unplug the power line, power supply is cut off completely.
- For outdoor installation in, please pay attention to waterproof equipment shell.

This manual contains technical errors, mismatches in product functions and operations, or printing errors. This manual will be updated according to the functions of the updated products, and we will regularly improve or update the products or processes described in this manual. The updated contents will be added to the new version of this manual without notice.

1、Connect

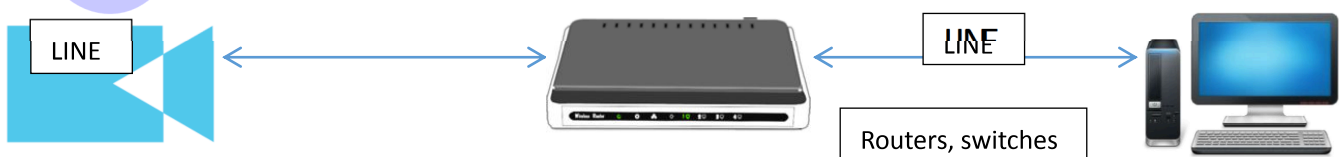
Connection mode A: Wired Network

The connection between camera and computer are mainly two, as shown in Figure 1.1.1 and 1.1.2:



Connection mode B: LAN connection

Figure 1.1.2 Connected through a switch or router



IPC USER MANUAL

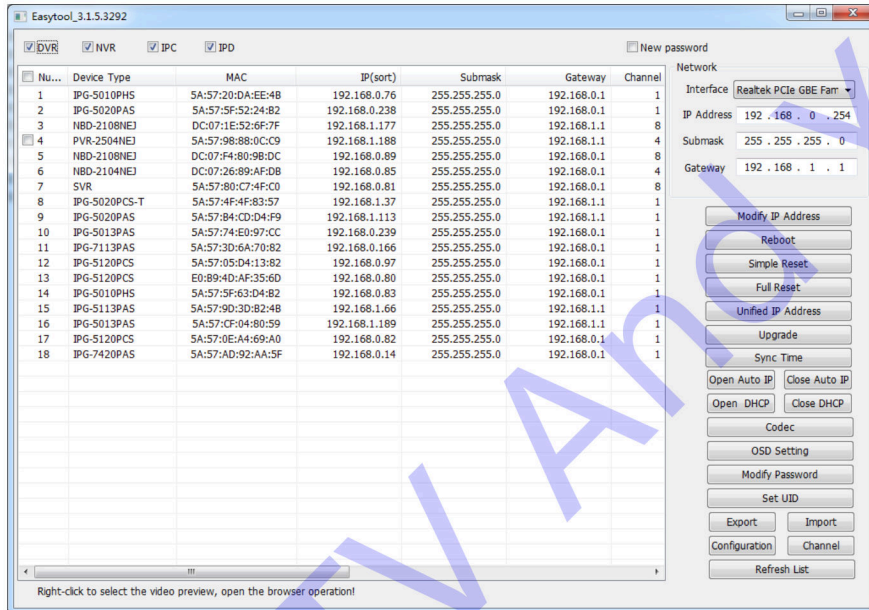
2、Device

2.1 Search Device

Through cable network access to the network before the camera, you first need to obtain its IP address, the user can through EasyTool tools management tools (equipment) to search the IP address of the network camera.

EasyTool, software window will automatically shows the running in the current local area network (LAN) network camera device type, MAC address, IP address, submask, gateway, channel, firmware version and device status information, as shown in figure.

EasyTool Please log in to our company's website to download: XXXXXX (Please upload to the Internet to give the download address, improve the download address.)



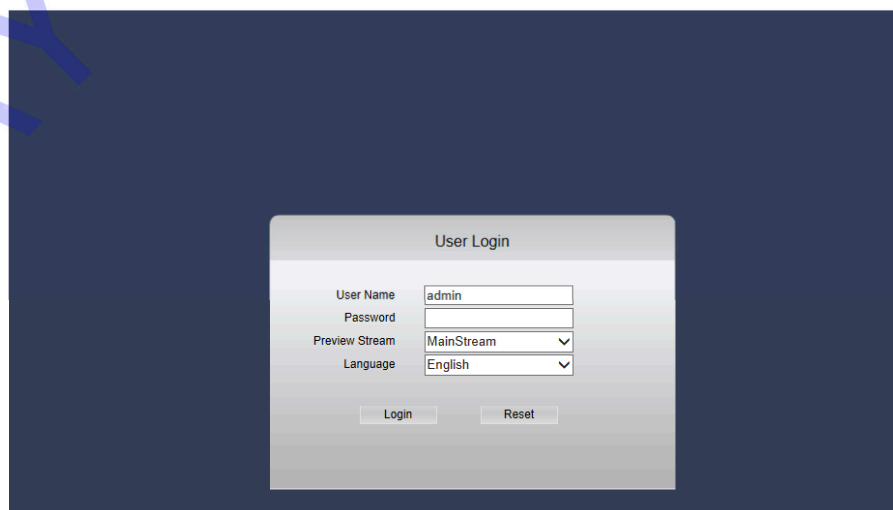
Note: The factory default IP network cameras as "192.168.1.68", the super user "admin", password is ""

Device browsing

First step: IP Login

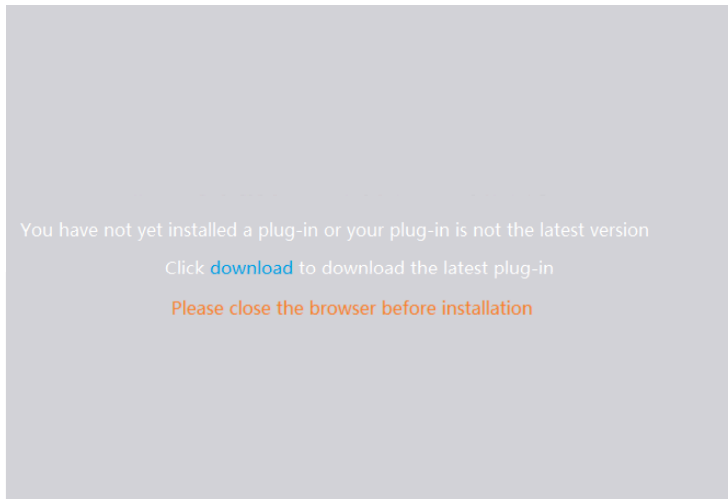
Enter the IP address of the network camera in the address bar, and then click Enter, the login screen appears. Enter the "User Name" (default: admin), "password" (default: admin), click [Login].

Note: The factory default IP network cameras as "192.168.1.68", the super user "admin", password is ""

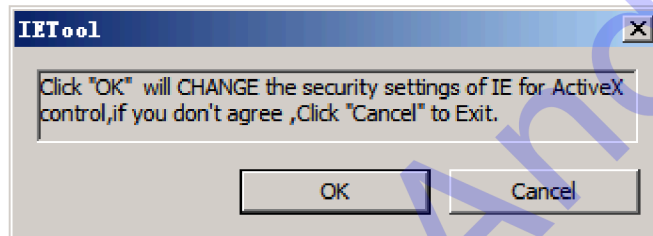


The page may be popped out after landing, please click the download button to download the plug-in.

IPC USER MANUAL



Download and run the plug-in, click the **OK** button to install the plug-in, after the installation is completed, turn off the IE to reopen, and enter the IP address to log in.



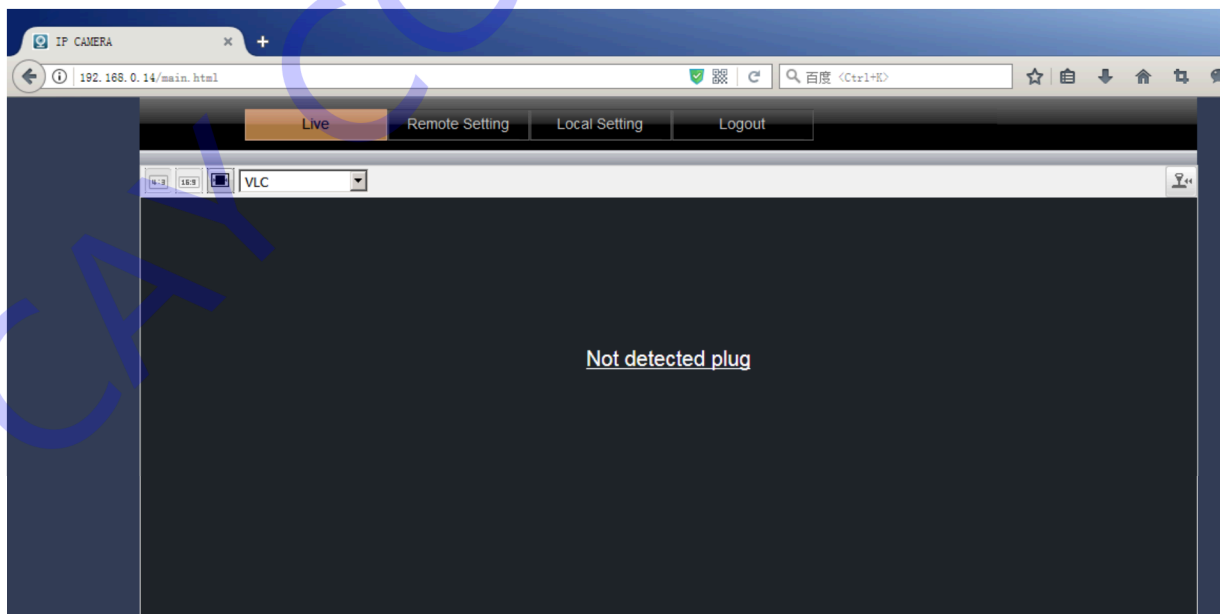
After landing, you can see the camera preview page.

3、FirefoXand Chrome preview

Here is a demonstration with Firefox.

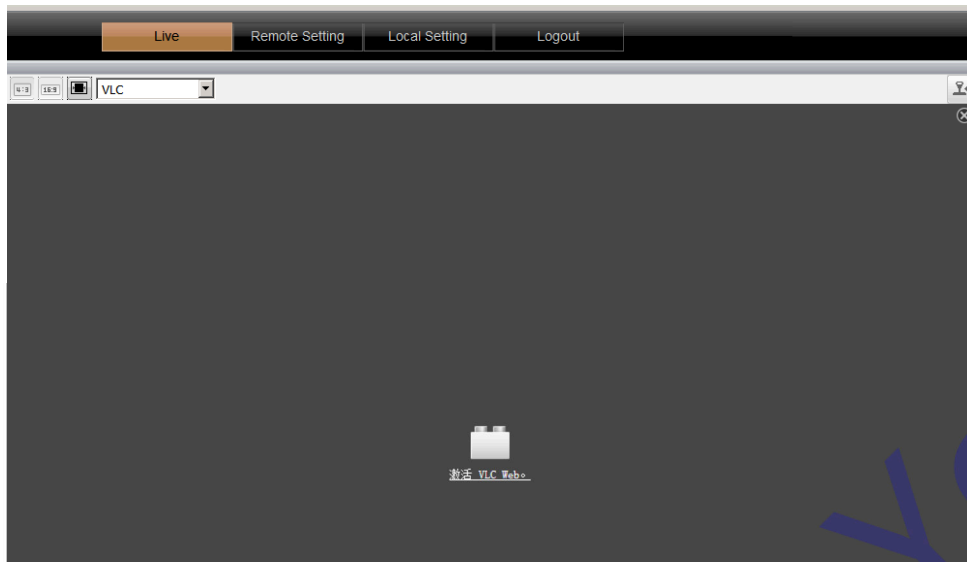
After the Firefox landing, there will be no plug-in:

Click the Not detected plug browser to jump to the VLC download page, click the download button for the VLC plug-in installation.



When the download is completed, restart the browser (turn off the browser to reopen), and the VLC Web will be prompted after the landing. Click the left mouse button to click activation, and if the browser intercepts, please click allow.

IPC USER MANUAL



After permission, you can use Firefox to watch the picture.

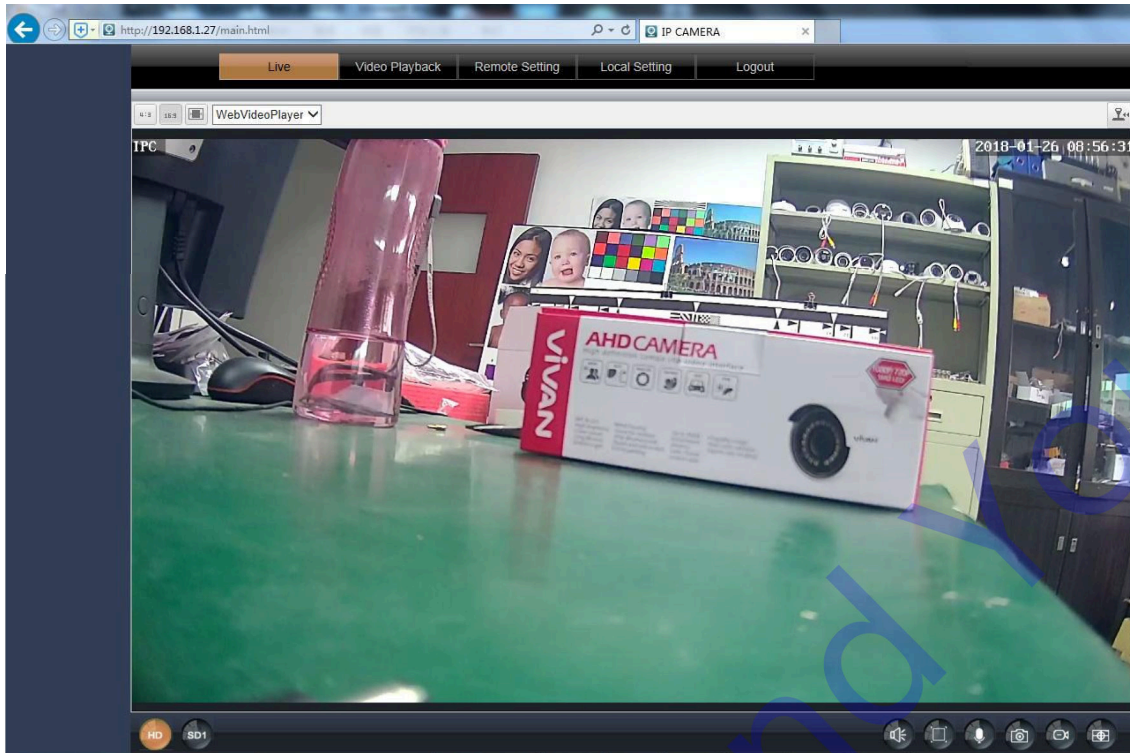


Parameter setting

4.1 Real time preview

Enter the IP address in the IE address bar for a landing Preview.

IPC USER MANUAL



	Compliance with 4:3 aspect ratio image size		Compliance with 16:9 aspect ratio image size		The location of the image size to fill
	PTZ			Support VLC, QuickTime, MJPEG plug-in.	
	Main stream preview		Sub-stream preview		Open Sound on
	Full screen		Start voice intercom		SnapShot
	Start recording		Electronic amplification		

4.2. Remote settings

Device Setting — OSD configuration

OSD: the default is IPC, and the user can set it on its own.

Display channel name: display channel name at the top left corner of the post - enabled preview page (set value of OSD)

Display time: display time at the top right corner of the preview page

Note: the IPC and time on the page can be dragged directly, and then stored directly after setting.

IPC USER MANUAL



Camera configuration — image configuration

The page can be set for the IPC image parameters, and then click save after the adjustment. Note: it takes effect immediately after setting.



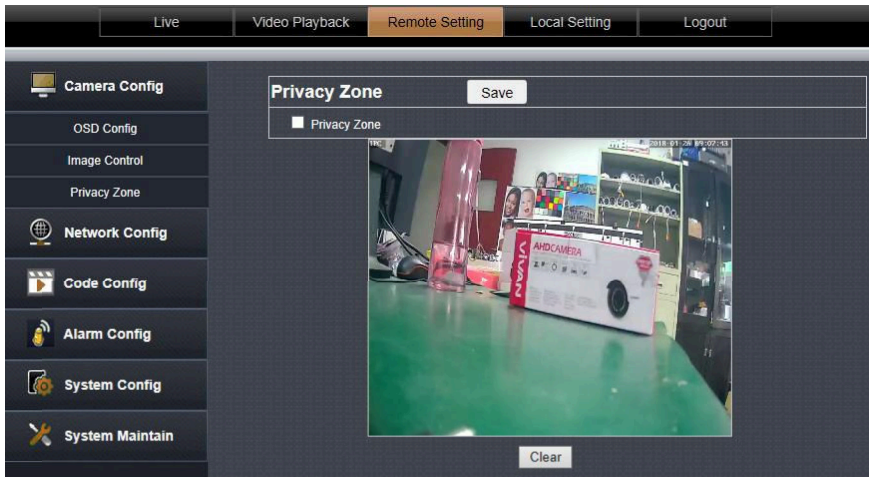
Camera configuration -privacy cover

Click privacy to cover the front of the selection box to enable.

After the use of the left mouse button on the picture frame can be.

If you need to clear the selected area, click the clear area button.

IPC USER MANUAL

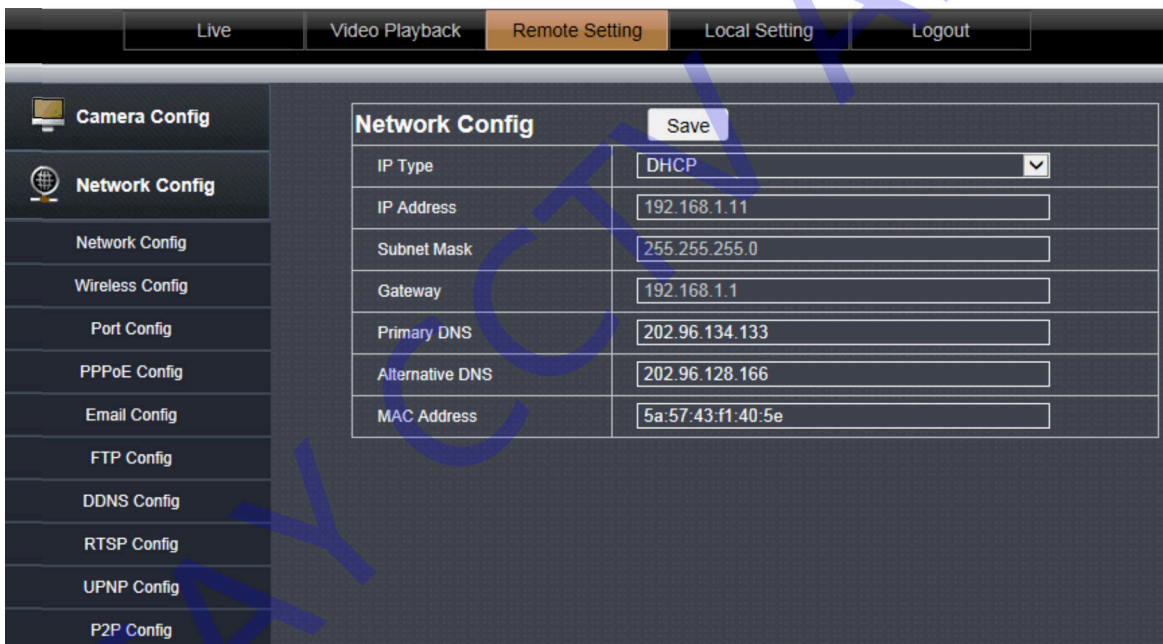


Network settings -network settings

IP types: [DHCP] and [manually set IP]. Set for [DHCP] camera from the DHCP server to get IP, set to [manually set IP] IP address, subnet mask, and the gateway can be manually set.

Adaptive IP: [enable] and [disable]. Set to [enable] device can be changed according to NVR or client's IP address, such as NVR or client's IP in 2 network segment, camera in 1 network segment, NVR click search, camera IP automatically change to 2 network segment.

Note: DHCP and adaptive functions will be automatically closed after the camera is connected for 6 hours. If you manually modify the IP address, the DHCP and the self applicable function will be closed.



Network settings -port settings

HTTP port: HTTP access port.

Signaling port: the camera signaling port.

Data port: camera data port.

Note: if the HTTP port is changed to the camera WEB page, you need to enter the http://IP:http port

The signaling port and data port are not recommended for modification.

IPC USER MANUAL

Port Config		Save
HTTP Port	<input type="text" value="80"/>	
Command Port	<input type="text" value="6060"/>	
Media Port	<input type="text" value="6066"/>	

Change the parameters will restart.

Network settings — ~~PPPoE~~ settings

The default is the disabled state.

This function is used for direct dialing on the Internet.

Camera Config	
Network Config	
Network Config	
Wireless Config	
Port Config	
PPPoE Config	
Email Config	
FTP Config	
DDNS Config	
RTSP Config	
UPNP Config	
P2P Config	

PPPoE Config		Save
PPPoE Config	<input type="text" value="Enable"/>	
User Name	<input type="text"/>	
Password	<input type="text"/>	
Status	<input type="text" value="Disconnected"/>	

Network settings - Mail settings

The default is the disabled state.

This page is used to set the mail alarm option. After [alarm setting] - [mobile detection] or [alarm input] associated with the mail alarm, the device sends an alarm mail according to the setting of this page.

Note: the address and password of the sender do not enter the error (the login account and password of the mailbox).

The hair box must open the SMTP server function, and pay attention to the SMTP server not to enter the error.

If the mail is not sent out, please try to unlock the mail encryption and change the corresponding encrypted SMTP port

IPC USER MANUAL

Email Config		Save
Email Config	Enable	
Email Encryption	Close	
SMTP Port	25	
SMTP Server		
Sender Email		
Sender Pwd		
Receiver Email1		
Receiver Email2		
Receiver Email3		
Theme		
Content		
(You can enter up to 127 characters)		
Attached Snapshot	Enable	
Snap interval	1min	
		Test Email

Network settings —FTP settings

The default is the disabled state.

This page is used to connect the FTP server. After the FTP upload is set up in the alarm settings, mobile detection or alarm input, once the device is triggered, the device will upload pictures and videos to the FTP server according to the settings of this page.

When the configuration is completed, you can click the test FTP function to test it.

FTP Config		Save	Test FTP
FTP Config	Enable		
Server	192.168.1.109		
Port	21		
User name	zhuowei		
Password		
Passive Mode	Close		
Save Folder	ftp		
Uploading	Picture		
Status	Not Connect		
For some FTP server, before using this function, it is necessary to create a folder named 'ftp' in the root directory of the server!			

Network settings —DDNS settings

This item is defaults to disable state.

This item needs to be registered for the username and password of the corresponding DDNS server address and to apply for the domain name only.

IPC USER MANUAL

DDNS Config		Save
DDNS Config	Enable	
DDNS Server	members.3322.org(static)	
Host Name		
User Name		
Password		
Update Time	30min	
Connection Status	Stopped	

Network settings —RTSP settings

After the modification, the corresponding RTSP port needs to be changed.

Main stream RTSP address: rtsp://IP:RTSP port /live/0/MAIN

Substream RTSP address: rtsp://IP:RTSP port /live/0/SUB

If you need to access the RTSP master stream of 192.168.0.14: rtsp:192.168.0.14:554/live/0/MAIN

RTSP Config		Save
RTSP Port	554	
MainStream rtsp://IP:Port/live/0/MAIN		
SubStream rtsp://IP:Port/live/0/SUB		
(Change the parameters will restart.)		

Network setting —UPnP

This item is defaults to disable state.

This function needs router support. After UPnP is enabled, users do not need to do port mapping on the router. Only by opening UPnP function on the router can port mapping function be realized.

IPC USER MANUAL


UPNP Config		Save
UPNP Config	<input type="button" value="Enable"/>	
Internet IP Address	<input type="text"/>	
HTTP Port	<input type="text" value="80"/>	<input type="text" value="80"/> — Success
RTSP Port	<input type="text" value="554"/>	<input type="text" value="554"/> — Success
Command Port	<input type="text" value="6060"/>	<input type="text" value="6060"/> — Success
Media Port	<input type="text" value="6066"/>	<input type="text" value="6066"/> — Success

Network setting —P2P

This page displays the P2P ID of the camera.

The user can scan the APP two-dimensional code of the page and download the cell phone APP. Then use APP to scan UID two-dimensional code to add camera remote preview.

P2P Config		Save
P2P	<input type="button" value="Enable"/>	
UID	<input type="text" value="NGLSPP-0000-PHBUB"/>	<input type="button" value="Input UID"/>
Status	<input type="text" value="Internet-Ready"/>	



Scan To Get UID



Scan To Download APP

Change the parameters will restart.

Coding settings -coding parameters

Main stream and sub bit stream 1: set the main stream of the camera and the parameter of the substream. The number of auxiliary code flow is subject to specific model.

Stream type: video stream and composite flow can be selected. The composite stream contains video stream and audio stream.

Video coding: the bitstream can be set to H264, MPEG4, MJPEG and H265 codes, which can be set according to the actual situation. The video coding type should be based on the specific type.

Resolution: set the resolution parameters of the camera display.

Frame rate: video frames per second, frame rate camera display parameter setting.

Rate control: supporting constant code rate and variable bit rate, constant representation of fixed rate transmission, and variable bitrate representation is self changing on the basis of not exceeding the upper limit of code rate.

Rate / picture quality: when set to a constant rate, the code rate is set, and the rate parameter can be set. When set to [variable code rate], it is quality, quality, middle and low option.

IPC USER MANUAL

Main Stream	Sub Stream
MainStream Save	
Stream Type	Video & Audio Stream
Video Codec	H.264
Resolution	1080P(1920*1080)
FPS	20 (fps)
Rate Control	VBR
Quality	Highest

Encoding settings -Audio settings

This page is used to set the audio parameters, select the device audio input type and audio format.

Note: some models have only one parameter and can not be set up.

Audio Parameters		Save
audio-in method	Line-in	
audio-in codec	G.711U	
Volume Setting	<input type="range"/> 80	

Alarm setting -Mobile detection

The mobile detection is set to indicate that the mobile detection function is effective.

The mobile detection area can be set directly on the picture frame by the mouse.

Sensitivity: setting the sensitivity of mobile detection triggering.

Trigger mail, capture, FTP, trigger trigger trigger Video: check the corresponding options after the mobile detection device will be triggered, the corresponding action.

Clear area: remove the mobile detection area that has been set up.

Select the picture: select the mobile detection trigger region.

Camera Config	Network Config	Code Config	Alarm Config	System Config	System Maintain				
<div> <div> <div>Motion</div> <div>Schedule</div> </div> <div> <div>Motion</div> <div>Save</div> </div> </div> <table border="1"> <tr> <td>Motion</td> <td>Enable</td> </tr> <tr> <td>Sensitivity</td> <td>Middle</td> </tr> </table> <div> <input type="checkbox"/> Send Email <input type="checkbox"/> Trigger FTP <input type="checkbox"/> Trigger Capture <input type="checkbox"/> Trigger Record </div> <div> </div> <div> <div>Clear</div> <div>All</div> </div>						Motion	Enable	Sensitivity	Middle
Motion	Enable								
Sensitivity	Middle								

Optional deployment time: all day long, custom. It is used to set the effective time of the mobile detection function.

IPC USER MANUAL

Motion **Schedule**

Schedule Save

Alarm Time All Day

	0	1	2	3	4	5	6	7	8	9	10	11	12	13	14	15	16	17	18	19	20	21	22	23
Sun.																								
Mon.																								
Tue.																								
Wed.																								
Thu.																								
Fri.																								
Sat.																								

System configuration -Time setting

Device name: used to set the name of the device.

Device Name Date/time DST

Device Name Save

Device Name IPC

Date /time:

Setting the format of the date and time, setting the time - to - time parameters of the NTP. The date and time format will be embodied directly on the OSD.

Device Name **Date/time** DST

Date/time Save

Date format YY-MM-DD

Time format 24Hour

Device date time 2018-01-26 09:16:59 Sync with PC date time

NTP Timing Open

Time zone (GMT +08:00) Beijing, Singapore, Taipei

Sync Interval 01 Hour

Server Address time.windows.com

Summer time:

Open and close summer hours.

Device Name **Date/time** **DST**

DST Save

Enable DST Open

Daylight Saving Time Mode Date

Time Offset 1Hour

Start Time 2017-3-2 02:00:00

End Time 2017-11-1 02:00:00

System settings - User management

Modify the login username and password to open and disable the user.

IPC USER MANUAL

User Management			Save
NO.	User Name	Enable/Disable	
1	admin	Enable	User Name: <input type="text" value="admin"/>
2	user1	Disable	Password: <input type="text"/>
3	user2	Disable	Enable/Disable: <input type="text" value="Enable"/>
4	user3	Disable	
5	user4	Disable	
6	user5	Disable	

System settings - Device information

This page displays some detailed parameters of the device, and the display will be different according to the different type of device.

Basic Info	
Device Name	<input type="text" value="IPC"/>
Device Model	<input type="text" value="IPG-7420PCS-S-W"/>
Device Serial Number	<input type="text" value="1139884126"/>
Software Version	<input type="text" value="1.0.0-20171208Z1S"/>
Web Version	<input type="text" value="17.12.08.3080"/>
OCX Version	<input type="text" value="2.1.43.3015"/>
Alarm Input Number	<input type="text" value="0"/>
Alarm Output Number	<input type="text" value="0"/>
Voice Talk	<input type="text" value="Support"/>

System configuration - Log query

This page can look at the log records in the device.

Log Query		Search
Log Type	<input type="text" value="All Log"/>	
BeginTime	<input type="text" value="2018"/> <input type="text" value="1"/> <input type="text" value="26"/> <input type="text" value="00"/> <input type="text" value="00"/> <input type="text" value="00"/>	
EndTime	<input type="text" value="2018"/> <input type="text" value="1"/> <input type="text" value="26"/> <input type="text" value="23"/> <input type="text" value="59"/> <input type="text" value="59"/>	
NO.	Event	Time
1	admin[192.168.1.28] User logout	2018-01-26 09:16:41
2	admin[192.168.1.28] User login	2018-01-26 09:15:25
3	admin[192.168.1.28] User logout	2018-01-26 09:08:11
4	admin[192.168.1.28] User login	2018-01-26 09:07:39
5	admin[192.168.1.28] User logout	2018-01-26 09:07:38
6	admin[192.168.1.28] User login	2018-01-26 09:04:29
7	admin[192.168.1.28] User logout	2018-01-26 09:03:42
8	admin[192.168.1.28] User login	2018-01-26 09:08:18

System configuration - Automatic maintenance

The default is to maintain once a week, and the user can modify it according to the requirements. After the maintenance time is reached, the device will be restarted automatically.

IPC USER MANUAL

Auto Reboot		Save
Maintenance Mode	Everyweek	
Week Plan	<input checked="" type="checkbox"/> Sun. <input type="checkbox"/> Mon. <input type="checkbox"/> Tue. <input type="checkbox"/> Wed. <input type="checkbox"/> Thu. <input type="checkbox"/> Fri. <input type="checkbox"/> Sat.	
Maintenance Time	23:23	
Next Maintenance Time	2018-01-28 23:23	

System settings — PTZ settings

Setting the PTZ parameters of the software, baud rate, and cloud platform protocol parameters.

PTZ Setting		Save
PTZ	Open	
PTZ Address	1	
Bitrate	9600	
PTZ Protocol	PelcoD	

System maintenance - Version upgrades

Click the directory button to browse to the device upgrade file, and then click the upgrade button to upgrade the device.

Firmware Update		
Upgrade file path	<input type="text"/>	Scan...
Upgrade		

System maintenance - Restore default

Simple recovery: keep the network parameters and user set parameters not to restore the default.

Complete recovery: all settings of the equipment are restored to the factory status.

Restart: the equipment is restarted once.

Select the option and click save.

Restore Default		Save
<input checked="" type="radio"/> Simple recovery		
<input type="radio"/> Restore all parameters to default settings		
<input type="radio"/> Reboot		

4.3 Local settings

Local disk: select the stored disk location.

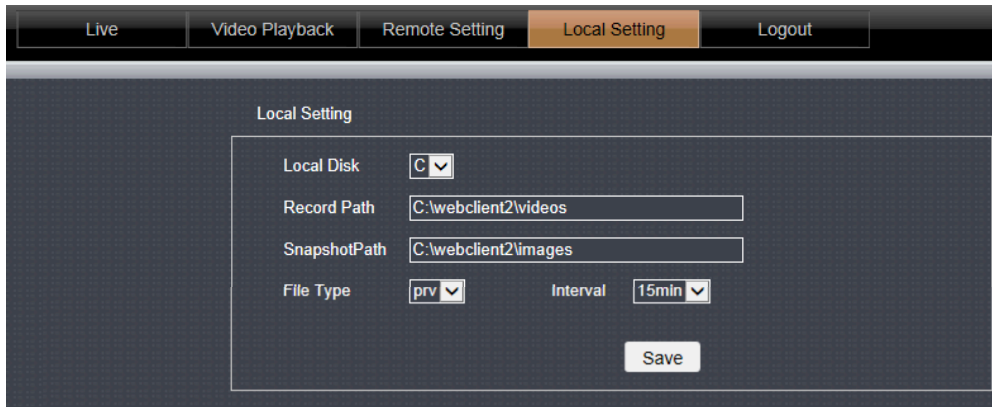
Video save path: the location of the video file stored in the real-time preview page when the video button is clicked.

Capture the save path: to create real-time preview page click the capture button when the video file location.

Video format: set the saved video format.

Video length: the maximum length of each video file is set.

IPC USER MANUAL



4.4 Logout

Write off the currently logged account.



5. FAQ

Q: What do you do if you can't access IP Camera through IE browsers?

A: Firstly, check if the network is not accessible?

The solution is to access the network with PC machine to test whether the network access can work normally. First, exclude cable fault, power failure, PC fault caused by virus, until Ping can be connected to each other by PC machine.

Secondly, check if IP address be occupied by other devices?

Solution: disconnect the connection between IP Camera and the network, connect IP Camera and PC separately, log in to IP Camera, and modify the device IP address.

Q: What is the possible cause of the IP address in a different subnet?

A: check the IP address of the server and the subnet mask address, and the settings of the gateway, and add the IP address of the same network segment to the IP Camera on the server side.

Or is there a conflict between the physical address in the network and IP Camera. If yes, pls modify the physical address of IP Camera.

Or has Web port been modified? If yes, pls contact the network administrator to get the appropriate port information. Otherwise to restore the default status of the factory through the reset button of the IP Camera panel or the interface line, then reconnect, the default IP address of the system is 192.168.1.168, and the subnet mask is 255.255.255.0.

Q: Why there is no live video in IE browsers?

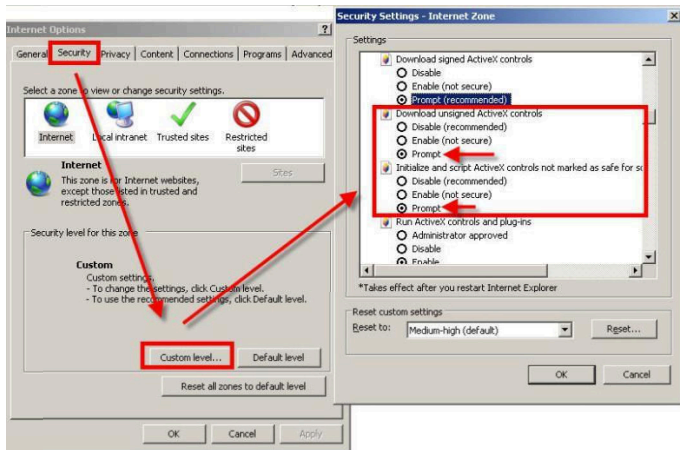
A: no plug-in installed? If yes, please install it when IP Camera is accessed with the browser (Internet Explorer) for the first time.

Install method: access the IP Camera address, click [download address], pop up the file download dialog box, select [run] or [save] to download. When the download is completed, install the operation. During the installation, please close the IE and VMS related to the plug-in.

Q: how can control can not be installed normally?

A: change the IE permissions, IE tools -> Internet options -> Security > Custom level, in the area of ACTIVEX, run the downloaded unsigned controls, allow the execution of unsigned controls, as shown below:

IPC USER MANUAL



Or other processes are using controls. If yes, pls close the process that can invoke the control, including CMS and IE.

Q: The equipment is in the process of upgrading, but no progress bar is displayed.

A: the control and IE page mismatch cause no progress bar display, redownload the control, install, install process reference manual.

Q: EasyTool and VMS search software do not search for devices

A: EasyTool and CMS software use multicast protocol to search for device network information across network segments, and firewall does not allow multicast data packets to pass through, so it can not search for network information of devices. If yes, pls close the firewall.

Or the device and the server are not in the same LAN. If yes, pls check the network to ensure that the device and the server are in a unified LAN

Q: Why is the video image not smooth?

A: It is possible that the frame rate of the video set by

1: IP Camera is too low to cause the non real time of the picture. The video frame rate parameter adjusting (according to different models, different frames)

2: too many users connect the device at the same time, causing the device CPU to overload.

You can turn off some of the clients or set up IP Camera to reduce frame rate or stream.

3: network bandwidth is too low, data congestion, resulting in packet loss. It can reduce the frame rate of video or reduce the bit rate, and reduce the network burden.

4: the server hardware configuration is too low to cause a lack of decoding. HD interface has certain requirements for graphics card, CPU and memory. The detection server CPU has been used in memory, and the device secondary code stream is used to decode, so as to reduce the main stream of bitstreams and reduce server burden.

Q: The image shows the color is not normal (in green or other color)

A: video parameters have been modified. pls detect hue and white balance in video parameters, it is recommended to use automatic white balance, and non professional personnel do not use manual white balance.

Q: Log in to the device, but can't modify any parameters

A: non administrator privileged login devices. login the device with administrator privileges

Q: After the upgrade of the equipment, the resetting of the equipment is not normal.

A: The possible reason: the IE typesetting has been changed and the device is re logged to the device to call the data in the cache, causing the typesetting to be abnormal

Solution: open the browser, click the "tools" menu, select the "Internet option", in "Internet temporary"

In the file, click the delete file button to delete the IE cache.

Q: the APP add device is displayed as off-line state.

A: click on the main menu button on the device - the system setting - the network set --P2P to see if the network state is ready for the Internet.

Q: LAN can be seen in P2P APP, but can not be watched outside the LAN.

A: the device is not connected to the external network.

click on the main menu button on the device - the system settings - the network set --P2P to see if the UID state is illegal. If the illegal UID is displayed, click restore the default button.